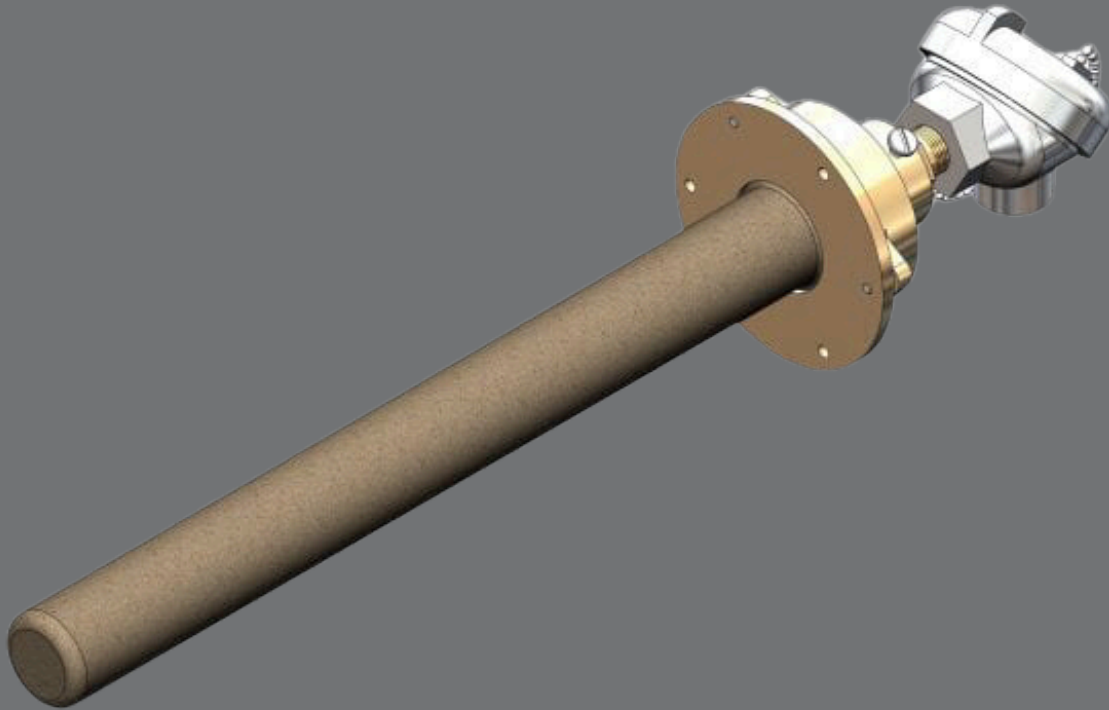


# 596 Noble metal support casting w- SiC PT thermocouple assembly

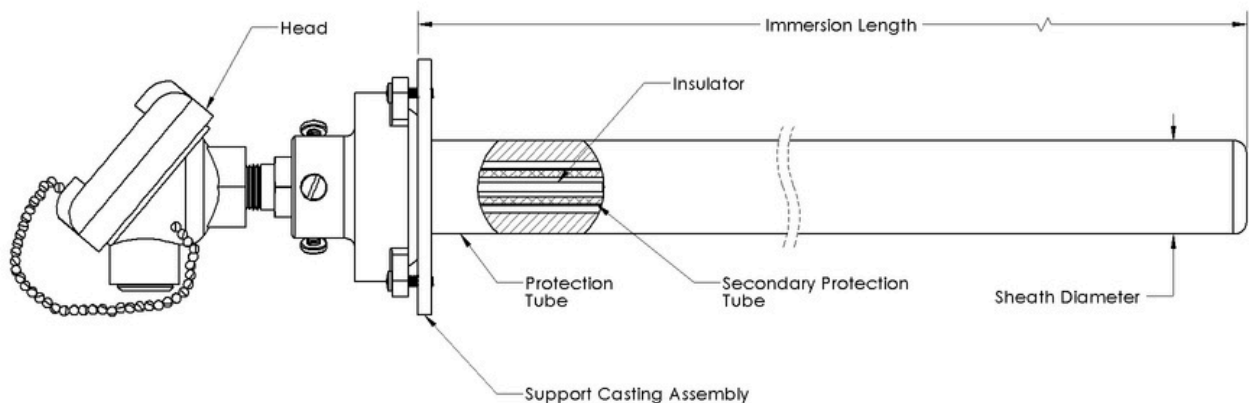


## Overview

A high temperature Noble metal thermocouple assembly, the model 595's elements are provided to match the ITS 1990 curve. 24 gauge (0.020") wire is standard with other gauges available. Insulators and protection tubes with cemented hex nipple and are made of alumina, mullite or recrystallized silicon carbide. Cast iron or aluminum screw cover heads are standard, with a porcelain collar installed for vertical applications.

# Technical specification

Feature	Description
Sensor type	High temperature Noble metal assembly
Tube length	6" to 48" in increments of 6"
Insulator material	Alumina (A), mullite (M)
Optional inner tube	Standard 1/4" x 3/8", mullite (M), alumina (A) or no inner tube (O)
Primary tube	Standard 7/16" x 11/16", mullite (M), alumina (A)
Secondary tube	Mullite (M), alumina (A), silicon carbide (SC) or none (O)
ANSI calibration	R, S, B
Accuracy	Standard limits of error, special limits of error (reference grade)
Number of circuits	1, 2
Hex fitting	1/2" x 3/4", steel
Head material	Standard cast iron, aluminum
Accessory	Optional split brass flange



## United States of America

707 Jeffrey Way  
Round Rock  
Texas 78665-2408  
USA

Tel: +1 512-434-2800

## United Kingdom

Innovation House  
Lancaster Road  
Ferndown Industrial Estate  
Wimborne  
Dorset BH21 7SQ  
UK

Tel: +44 (0) 1202 850 450

For more information

Web: [cwic.curtisswright.com](http://cwic.curtisswright.com)

Email: [sales@nspi.curtisswright.com](mailto:sales@nspi.curtisswright.com)

## About Curtiss-Wright

Curtiss-Wright Round Rock and Wimborne have worked with nuclear and industrial customers for over 60 years. We support customers across the world from facilities located in the US and UK. Our solutions are embedded in strategic national infrastructure and our people are active partners in customer programs that are focused on delivering advanced future nuclear and industrial capabilities.

Curtiss-Wright Corporation (NYSE: CW) is a global integrated business that provides highly engineered products, solutions and services mainly to Aerospace & Defense markets, as well as critical technologies in demanding commercial power, process and industrial markets. We leverage a workforce of approximately 8,600 highly skilled employees who develop, design and build what we believe are the best engineered solutions to the markets we serve. Building on the heritage of Glenn Curtiss and the Wright brothers, Curtiss-Wright has a long tradition of providing innovative solutions through trusted customer relationships.